

LARAMIE COUNTY  
CHEYENNE, WY.

CERTIFIED LAND CORNER RECORDATION DEC 23 AM 9 08

DESCRIPTION OF CORNER EVIDENCE FOUND, AND ORIGINAL RECORD (If known)

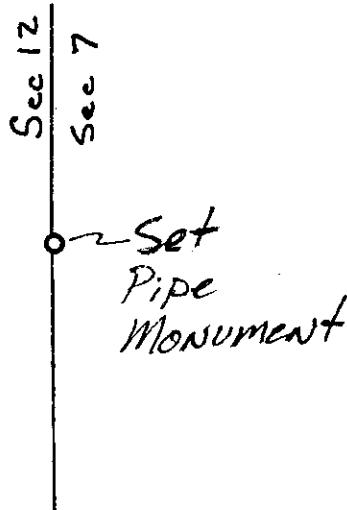
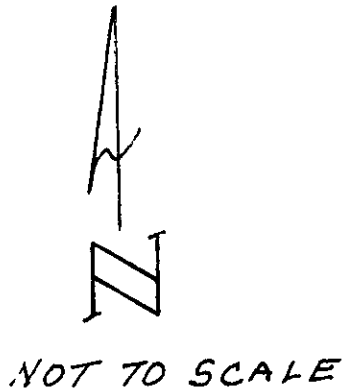
1/4  
Corner  
Sec. 12 | Sec. 7  
T 13N  
R 65W | R 64W

Found: No evidence. A thorough search, including probing the area, was conducted.  
Accessories found - None.  
GLO: Set limestone 18" x 7" x 3" for 1/4 section corner.

DESCRIPTION OF MONUMENT AND ACCESSORIES ESTABLISHED TO PERPETUATE THE ORIGINAL LOCATION OF THIS CORNER:

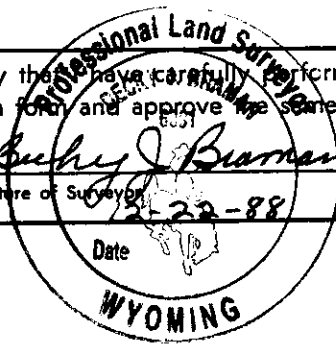
Set: At proportionate distance, set aluminum pipe monument, 2" i.d., 36" long, with 3" aluminum cap. See Map of Survey filed with Laramie County Clerk for dimensions to adjacent corners.

SKETCH, WITH COURSE AND DISTANCE TO ADJACENT CORNER IF DETERMINED IN THIS SURVEY. (May Sketch or Paste Reproduction on Reverse Side.)



I, BECKY J. BRAMAN certify that I have carefully performed or reviewed the work done on the diagrammed corner as reported on this recordation form and approve the same.

Becky J. Braman Signature of Surveyor  
PLD 3881 Registration No.  
12-22-88 Date



STATE OF WYOMING,  
Office of Clerk and Recorder,  
County of LARAMIE

This "corner record" was filed for record on the \_\_\_\_\_ day of \_\_\_\_\_, 19\_\_\_\_, was noted on the cross-index plat and is assigned page No. \_\_\_\_\_, in book No. \_\_\_\_\_.

Cross Index No.	County Official	
	T.	R.
<u>61</u>	<u>13N</u>	<u>64W 6th Mer.</u>
<u>625</u>	<u>13N</u>	<u>65W 6th Mer.</u>
_____	_____	_____ Mer.
_____	_____	_____ Mer.
_____	_____	_____ Mer.
_____	_____	_____ Mer.
_____	_____	_____ Mer.